



Wet/Dry Vacuums
Operator's Manual

1250W / 20L
Model No. VMVQ1218S



FOR YOUR SAFETY

Read and understand this manual before use.
Keep this manual for future reference.



TABLE OF CONTENTS

SECTION	Page
Table of contents	2
Warranty.....	2
Safety Instructions and Warnings	3
Double Insulation instructions.....	5
Specifications.....	6
Location of parts.....	7
General Assembly Instructions	8
Dry Vacuum Operation	9
Wet Vacuum Operation	11
Blowing Operation	12
Maintenance	13
Instaling&Cleaning Dust Filter.....	14
Instaling&Cleaning Foam Filter.....	15
Troubleshooting.....	16
ENVIRONMENTAL PROTECTION.....	16

Thank you for purchasing this Vacmaster® wet/dry vacuum cleaner. Feel confident that with Vacmaster® you are obtaining a high quality product engineered for optimal performance.

This vacuum is capable of picking up liquids and dry materials.

FOR YOUR SAFETY: CAREFULLY READ AND UNDERSTAND ALL INSTRUCTIONS

WARRANTY

This Vacmaster® takes pride in producing a high quality, durable product. This Vacmaster® product carries a limited two (2) year warranty against defects in workmanship and materials from date of purchase under normal household use. If product is to be used for commercial, industrial or rental use, a 90 day limited warranty will apply. Warranty does not apply to defects due to direct or indirect abuse, negligence, misuse, accidents, repairs or alterations and lack of maintenance. Please keep your receipt as proof of purchase.

This warranty gives you specific legal rights, and you may have other rights, which vary from state to state.

SAFETY INSTRUCTIONS & WARNINGS

IMPORTANT SAFETY INSTRUCTIONS

READ AND UNDERSTAND ALL INSTRUCTIONS BEFORE USING THIS VACUUM

Read and understand this owner's manual and all labels on the Vacuum cleaner before operating. Safety is a combination of common sense, staying alert and knowing how your vacuum works.

Use this Wet/Dry Vac only as described in this manual. To reduce the risk of personal injury or damage to your Wet/Dry Vac, use only Vacmaster® recommended accessories.

Household Type

SAVE THIS MANUAL FOR FUTURE REFERENCE.

When using an electrical appliance, basic precautions should always be followed including the following:

WARNING: TO REDUCE THE RISK OF FIRE, ELECTRIC SHOCK OR INJURY:

- Do not run vac unattended.
- Do not vacuum, or use this Wet/Dry Vac near flammable liquids, gases, or explosive vapors like gasoline or other fuels, lighter fluids, cleaners, oil-based paints, natural gas, hydrogen, or explosive dusts like coal dust, magnesium dust, grain dust, or gun power. Sparks inside the motor can ignite flammable vapors or dust.
- Do not vacuum anything that is burning or smoking, such as cigarettes, matches, or hot ashes.
- Keep cord away from heated surfaces.
- Do not expose to rain. Store indoors.
- Do not unplug by pulling on cord. To unplug, grasp the plug, not the cord.
- Do not use with damaged cord, plug or other parts.
- If the appliance is not working as it should, has missing parts, has been dropped, damaged, left outdoors, or dropped into water,

return it to a service center.

- Do not pull or carry by cord, use cord as handle, close a door on cord, or pull cord around sharp edges or corners.
- Do not run Wet/Dry Vac over cord.
- Do not handle plug or the Wet/Dry Vac with wet hands.
- To reduce the risk of health hazards from vapors or dusts, do not vacuum toxic materials.
- Do not use or store near hazardous materials.
- Do not use this Wet/Dry Vac with a torn filter or without the filter installed except when vacuuming liquids as described in the operation section of this manual.
- Do not allow to be used as a toy. Close attention is necessary when used by or near children.
- To reduce the risk of injury from accidental starting, unplug power cord before changing or cleaning filter.
- Do not leave Wet/Dry Vac unattended when plugged in. Unplug from outlet when not in use and before servicing.
- Turn off Wet/Dry Vac before unplugging.
- Do not put any object into ventilation openings. Do not vacuum with any ventilation openings blocked; keep free of dust, lint, hair or anything that may reduce air flow.
- Keep hair, loose clothing, fingers, and all parts of body away from openings and moving parts.
- To reduce the risk of falls, use extra care when cleaning on stairs.
- If the supply cord is damaged, it must be replaced by the manufacturer, its service agent or similarly qualified persons in order to avoid a hazard.
- This appliance is not intended for use by persons (including children) with reduced physical, sensory or mental capabilities, or lack of experience and knowledge, unless they have been given supervision or instruction concerning use of the appliance by a person responsible for their safety.
- Children should be supervised to ensure that they do not play with the appliance.
- For additional protection: It is recommended that this vac can be used in conjunction with residual current device (RCD) with a rated residual current of 30mA or less.

When using as blower:

- Direct air discharge only at work area.
- Do not use Wet/Dry Vac as a sprayer.
- Do not direct air at bystanders.
- Keep children away when blowing.
- Use safety goggles.

DOUBLE INSULATION INSTRUCTIONS

This Wet/Dry Vac is double-insulated, eliminating the need for a separate grounding system. Use only identical replacements parts. Read the instructions for Servicing Double-Insulated Wet/Dry Vacs before servicing. Use this Wet/Dry Vac as described in this manual.

Observe the following warnings that appear on the motor housing of your Wet/Dry Vac.




DOUBLE INSULATED - GROUNDING NOT REQUIRED - WHEN SERVICING USE ONLY IDENTICAL REPLACEMENT PARTS.

WARNING: TO REDUCE THE RISK OF ELECTRIC SHOCK-DO NOT EXPOSE TO RAIN. STORE INDOORS.

WARNING: FOR YOUR OWN SAFETY, READ AND UNDERSTAND OPERATOR'S MANUAL. DO NOT RUN UNATTENDED. DO NOT PICK UP HOT ASHES, COALS, TOXIC, FLAMMABLE OR OTHER HAZARDOUS MATERIALS, DO NOT USE AROUND EXPLOSIVE LIQUIDS OR VAPORS.

CAUTION:

- Do not vacuum drywall dust or fireplace soot or ash. This is a very fine dust which will not be captured by the filter and may cause damage to motor and void the warranty.

WARNING: SERVICING OF DOUBLE-INSULATED Wet/Dry VACUUM WITH A DOUBLE-INSULATED Wet/Dry VAC, TWO SYSTEMS OF INSULATION ARE PROVIDED INSTEAD OF GROUNDING. NO GROUNDING MEANS IS PROVIDED ON A DOUBLE-INSULATED APPLIANCE, NOR SHOULD A MEANS FOR GROUNDING BE ADDED. SERVICING A DOUBLE INSULATED WET/DRY VACUUM REQUIRES EXTREME CARE AND KNOWLEDGE OF THE SYSTEM, AND SHOULD BE DONE ONLY BY QUALIFIED SERVICE PERSONNEL. REPLACEMENT PARTS FOR A DOUBLE-INSULATED WET/DRY VACUUM MUST BE IDENTICAL TO THE PARTS THEY REPLACE. YOUR DOUBLE-INSULATED WET/DRY VAC IS MARKED WITH THE WORDS 'DOUBLE INSULATED' AND THE SYMBOL  (SQUARE WITHIN A SQUARE) MAY ALSO BE MARKED ON THE APPLIANCE.

- For Household Use Only.
- To reduce the risk of electric shock-unplug before cleaning or servicing.
- DO NOT use without filters in place.

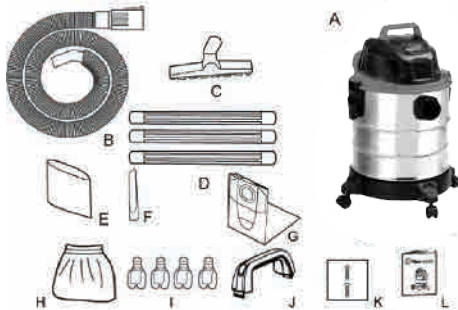
CAUTION: TO REDUCE THE RISK OF INJURY FROM MOVING PARTS- UNPLUG BEFORE SERVICING.

SPECIFICATIONS

Motor :	220-240V~50Hz
Container :	20L
Watt :	1250W
Filter-Dry :	Reusable Cloth Filter,Dust bag
Filter-Wet:	Foam Sleeve Filter

LOCATION OF PARTS

Remove entire contents from carton. Check each item against the contents list.



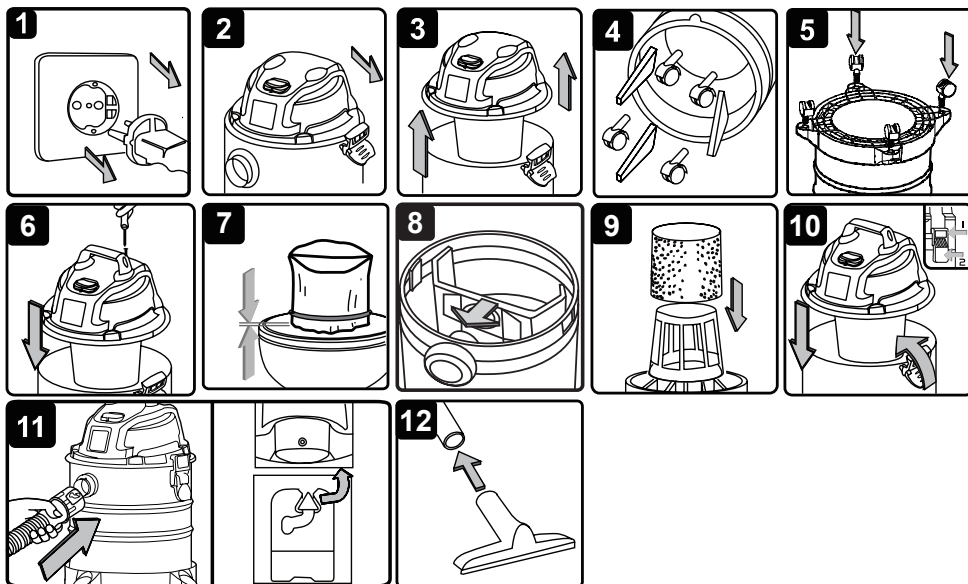
Contents List

Key	Description.....	QTY
A	Vac Assembly	1
B	Hose.....	1
C	Floor Nozzle.....	1
D	Extension Wands.....	3
E	Foam Sleeve Filter.....	1
F	Crevice Tool.....	1
G	Dust Bag.....	1
H	Reusable Cloth Filter.....	1
I	Feet With Casters	4
J	Handle.....	1
K	2 Screws (Bag).....	1
L	Operator's Manual.....	1

NOTE: The hose and accessories for this vacuum are 35mm diameter.



GENERAL ASSEMBLY INSTRUCTIONS

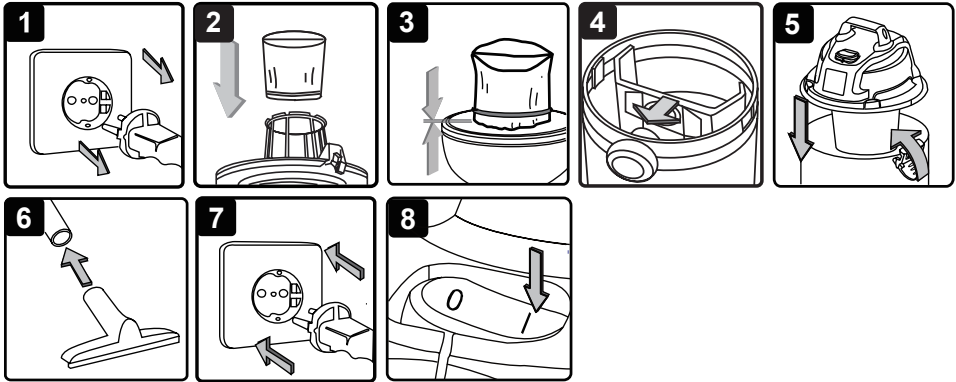


WARNING: DO NOT PLUG IN POWER CORD TO POWER OUTLET, MAKE SURE PLUG IS DISCONNECTED BEFORE ASSEMBLING THE WET/DRY VAC

GENERAL ASSEMBLY

1. Verify that the power cord is disconnected from the outlet (Fig. 1).
2. Undo the clasps (Fig. 2).
3. Lift the top section off the container (Fig. 3).
4. Remove the contents from inside the container (Fig. 4).
5. Turn the container upside down, and insert the four castors. Verify that they are mounted correctly. Do not over-tighten (Fig. 5).
6. Insert the handle into the slots on the power head and pressure into place (Fig. 6).
7. For dry vacuuming, install the supplied dust filter and dust bag.(Fig. 7, Fig 8).
8. For wet vacuuming, install the supplied foam filter (Fig. 9).
9. Place the top section back on the container (Fig. 10).
10. Align the top section with the clasps, and snap into place by applying pressure until clasps latch into place.
11. Insert the large end of the hose into the front inlet of the container, and lock it by pushing and twisting (Fig. 11).
12. Choose the desired accessories and push onto the suction tube (Fig. 12).

DRY-VACUUM OPERATION



DRY VACUUMING

WARNING: BE SURE TO READ, UNDERSTAND, AND APPLY INFORMATION, ENTITLED 'SAFETY INSTRUCTIONS & WARNINGS'. DO NOT VACUUM IN AREAS WITH FLAMMABLE GASES, VAPORS, OR EXPLOSIVE DUSTS IN THE AIR. FLAMMABLE GASES OR VAPORS INCLUDE BUT ARE NOT LIMITED TO; LIGHTER FLUID, SOLVENT TYPE CLEANERS, OIL-BASE PAINTS, GASOLINE, ALCOHOL OR AEROSOL SPRAYS. EXPLOSIVE DUSTS INCLUDE BUT ARE NOT LIMITED TO; COAL, MAGNESIUM, GRAIN OR GUN POWDER. TO REDUCE THE RISK OF HEALTH HAZARDS FROM VAPORS OR DUST, DO NOT VACUUM TOXIC MATERIALS.

CAUTION:

- Do not vacuum drywall dust or fireplace soot or ash. This is a very fine dust which will not be captured by the filter and may cause damage to motor and void the warranty.

WARNING: DO NOT PLUG IN POWER CORD TO POWER OUTLET. MAKE SURE PLUG IS DISCONNECTED BEFORE CHANGING AND CLEANING FILTERS.

1. Verify that the power cord is disconnected from the outlet (Fig. 1).
2. In order to prepare your vacuum for dry vacuuming, verify that the dust filter is clean and dry. Place the dust filter over the basket filter and centre it. Push down until the mounting ring of the dust filter is positioned against the ribs of the top section (Fig. 2).
3. Verify that the dust filter completely covers the filter basket. Also verify that all edges of the dust filter are secure under the mounting ring (Fig. 3).
4. Verify that the dust bag is installed to the inside of the tank (Fig. 4)
5. Place the top section back on the container, and secure it in place using the clasps (Fig. 5).

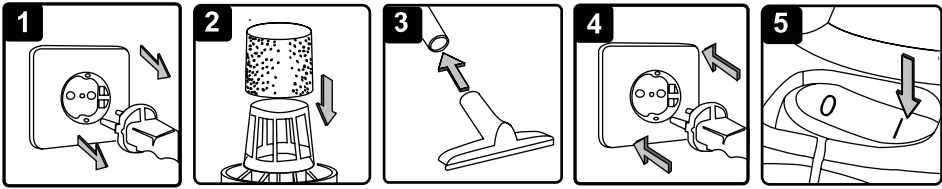
OPERATING INSTRUCTIONS: DRY VACUUMING

6. Insert the larger end of the flexible hose into the front inlet on the tank, and lock in place. Push the required attachment onto the free end of the hose or extension (Fig. 6).
7. Plug the power cord into the outlet (Fig. 7).
8. Turn the motor on by flipping the switch to the "I" position (Fig. 8)
9. Once you have completed vacuuming, flip the switch to the "O" position and unplug the power cord from the power outlet.

DO NOT USE THE DUST FILTER FOR WET OR SAHRP MATERIALS.
DO NOT USE DUST BAG FOR LIQUID VACUUMING

O = OFF I = ON

WET-VACUUM OPERATION



WET VACUUMING

WARNING: BE SURE TO READ, UNDERSTAND, AND APPLY INFORMATION, ENTITLED 'SAFETY INSTRUCTIONS & WARNINGS'. DO NOT VACUUM IN AREAS WITH FLAMMABLE GASES, VAPORS, OR EXPLOSIVE DUSTS IN THE AIR. FLAMMABLE GASES OR VAPORS INCLUDE BUT ARE NOT LIMITED TO; LIGHTER FLUID, SOLVENT TYPE CLEANERS, OIL-BASE PAINTS, GASOLINE, ALCOHOL OR AEROSOL SPRAYS. EXPLOSIVE DUSTS INCLUDE BUT ARE NOT LIMITED TO; COAL, MAGNESIUM, GRAIN OR GUN POWDER. TO REDUCE THE RISK OF HEALTH HAZARDS FROM VAPORS OR DUST, DO NOT VACUUM TOXIC MATERIALS.

WARNING: DO NOT PLUG IN POWER CORD TO POWER OUTLET. MAKE SURE PLUG IS DISCONNECTED BEFORE CHANGING AND CLEANING FILTERS.

1. Verify that the power cord is disconnected from the outlet. Verify that the container is clean and free of dust and dirt (Fig. 1).
2. Remove the dust filter and dust bag, and install a foam filter over the filter basket, and place the top section back on the container (Fig. 2).

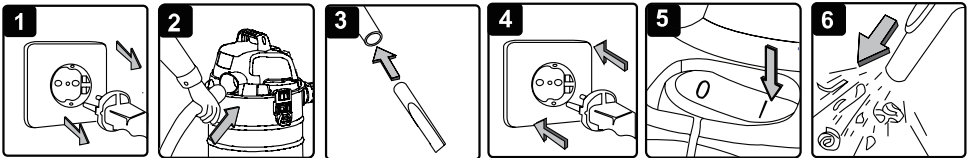
DO NOT USE dust filter for wet materials. OPERATING INSTRUCTIONS: WET VACUUMING

3. Fit the desired nozzle onto the vacuum hose (Fig. 3).
4. Verify that the switch is in the 'O' position before plugging the power cord into the outlet (Fig. 4). By flipping the switch to the "I" position (Fig. 5)

Remember! The foam filter must be removed after wet vacuuming, and a dust filter must be installed before dry vacuuming again.

IMPORTANT! When vacuuming large quantities of liquids, do not immerse the nozzle completely in the liquid; leave a gap at the tip of the nozzle opening to allow air inflow. The machine is fitted with a float valve that stops the suction action when the container reaches its maximum capacity. You will notice an increase in motor speed. When this happens, turn off the machine, disconnect from power supply, and drain the liquid into a suitable receptacle or drain. To continue vacuuming, refit the container with the drain cap. After wet vacuuming, turn the machine off and remove plug from power supply. Empty the container, clean and dry the inside and outside before storage.

BLOWING OPERATION



WARNING: ALWAYS WEAR SAFETY GOGGLES COMPLYING WITH AUSTRALIAN STANDARDS

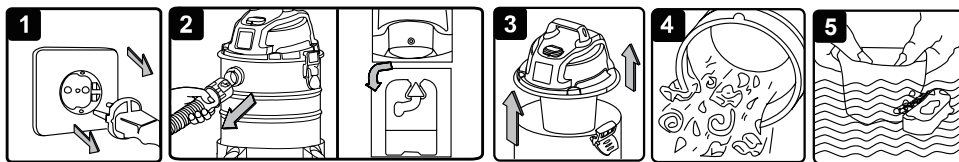
WARNING: KEEP BYSTANDERS CLEAR FROM BLOWING DEBRIS.

WARNING: WEAR A DUST MASK IF BLOWING CREATES DUST THAT MIGHT BE INHALED.

1. Verify that the power cord is disconnected from the outlet. (fig.1)
2. Disconnect the hose from the vacuum, turning large end in counter clockwise direction. (fig.2)
3. Undo the latches and remove the power head from the container. (fig.3)
4. Clear all dirt or debris from the container and hose. (fig.4)
5. Check the hose, attachments, and power cord to verify that they have not been damaged.

WARNING! IF THE HOSE IS STILL BLOCKED AFTER A FEW SECONDS, TURN OFF THE UNIT AND CLEAR THE HOSE MANUALLY.

MAINTENANCE



WARNING: DO NOT PLUG IN POWER CORD TO POWER OUTLET. MAKE SURE PLUG IS DISCONNECTED BEFORE CHANGING AND CLEANING FILTERS.

1. Verify that the power cord is disconnected from the outlet (Fig. 1).
2. Disconnect the hose from the container (Fig. 2)
3. Undo the clasps and remove the top section from the container (Fig. 3).
4. Clear all dirt or debris from the container and hose (Fig. 4).
5. Clean the foam filter or dust filter by washing it with a mild soapy solution (Fig. 5).
6. Check the hoses, attachments, and power cord to verify that they have not been damaged.

IMPORTANT! Clean or change the cloth filter regularly for best performance.

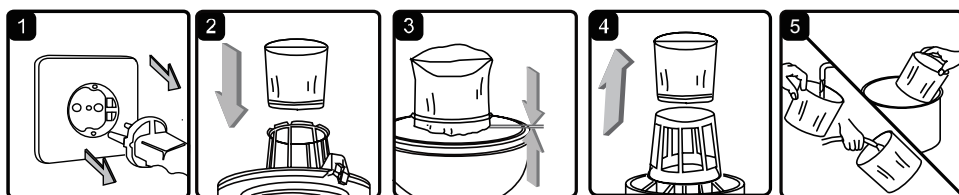
ALWAYS USE CLOTH FILTER FOR DRY VACUUMING. If the machine is used without the cloth filter, the motor will burn out and the warranty will be voided. Always keep spare filters on-hand.

NOTICE! The filters included are made of high quality materials designed to stop small dust particles. The cloth filter should be used for dry pick-up only. A dry cloth filter is necessary to pick up dust. If the cloth filter is wet, it will clog quickly and be very difficult

to clean. Handle the filter carefully when removing it for cleaning and replacing it. Check the filters for tears or small holes, a small hole can let dust pass through and out of the cleaner. Do not use a filter with holes or tears, replace it immediately.

WARNING! ALWAYS DISCONNECT THE PLUG FROM THE POWER OUTLET BEFORE REMOVING THE POWER HEAD FROM CONTAINER.

INSTALLING & CLEANING REUSABLE CLOTH FILTER



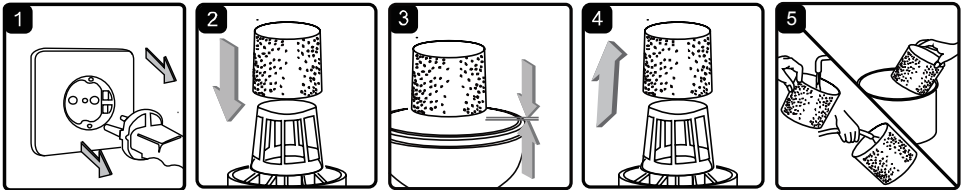
Installing Reusable Cloth Filter

1. Verify that the power cord is disconnected from the outlet (fig.1)
2. Remove power head and place in upside down position.
3. Slide reusable cloth filter down over the filter cage making sure the whole cage is covered. (fig.2 & 3)
4. Replace the power head on to the container.

Removing and Cleaning Reusable Cloth Filter

1. With the removed power head in the upside down position.
2. Carefully remove the reusable cloth filter from the filter cage. (fig. 4) Clean the filter by gently tapping or brushing dirt off. Cleaning should not be done indoors in living areas.
3. Use a mild soap and water solution to wash reusable cloth filter and rinse with clean water. (fig. 5)
4. Allow the wet filter to air dry for 24 hours before installing onto the filter cage.

INSTALLING & CLEANING FOAM SLEEVE FILTER



Installing Foam Sleeve Filter

1. Verify that the power cord is disconnected from the outlet. (fig.1)
2. Remove power head and place in upside down position. Follow instructions to remove cloth filter.
3. Carefully slide foam sleeve filter down over the filter cage making sure the whole cage is covered. (fig.2 & 3)
4. Replace the power head on to the container.

Cleaning Foam Sleeve Filter

1. With the removed power head in the upside down position, carefully remove foam sleeve filter. (fig.4)
2. Use a mild soap and water solution to wash foam sleeve filter and rinse with clean water. (fig.5)
3. Allow filter to air dry before installing and using again.

TROUBLESHOOTING

WARNING! TO REDUCE THE RISK OF ELECTRIC SHOCK-UNPLUG BEFORE TROUBLESHOOTING

Symptom	Possible Causes	Corrective Action
Vacuum will not operate.	1) No power supply.	1) Check power supply – cord, breakers, fuses.
	2) Faulty power cord.	2) Check the power cord and repair it or replace it if necessary.
	3) Container full of liquid.	3) Empty container.
Dust comes from motor cover.	1) The dust filter is missing or damaged.	1) Attach or replace dust filter.
Reduced efficiency and motor/speed vibration.	1) There is a blockage in the nozzle, the hose, or the container inlet, or the dust filter is blocked by fine dust.	1) Check the nozzle, the hose, and the container inlet for blockage. Take off the dust filter, and wash and clean it. Reuse it when it is dry. It is recommended to use a new dust filter.

ENVIRONMENTAL PROTECTION



Recycle unwanted materials instead of disposing of them as waste. All tools, accessories and Packaging should be sorted, taken to a recycling centre and disposed of in a manner which is compatible with the environment.